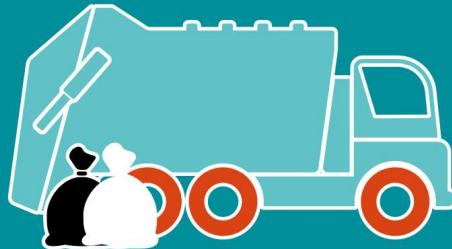


# Cabinet

3 June 2020



# Leader's portfolio

- “Our Plan to Rebuild” – government strategy next stage of returning to a “new” normal
- We are setting up four recovery task and finish groups, we listen to our staff and engaging with our residents and business and all in our community
- We have maintained regular communication and engagement with Town and Parish Councils
- We have offered to support Town and Parish Councils who find themselves in financial distress.



# Community Affairs portfolio



- Local Response Centre has continued to operate from Applemore Health and Leisure centre. We have now received over 1000 referrals and made 860 deliveries.
- We are working with our partners to consider future arrangements for the Response centre and discussions are progressing well.
- We are preparing to open some of our information offices during June. The public offices will be following strict working safely guidance for both our staff and customers.
- The development of our new website is progressing well and this will be launched in mid July.
- The overall net financial impact to April and May totals £25,000

# Housing portfolio



- Emphasis is now on restoring all housing services including routine repairs and maintenance of council properties.
- All works in tenants' homes is being undertaken with regard to social distancing and hygiene in accordance with Government published advice.
- Reletting of council properties has now commenced – ensuring that all priority families waiting, are rehoused at the earliest opportunity.
- Additional work is being carried out on those homeless households housed in temporary accommodation as a direct result of the Covid-19 – the objective being to find suitable longer term accommodation.
- The overall net financial impact April to May totals £119,000

# Economic development portfolio



- Economic Development Team have continued to work well with Revenues colleagues and have established a joint approach in the administration of the new Discretionary Business Grant Scheme
- Initial Rural Resilience Fund of £25k now distributed
- Further £25k Rural Resilience Fund received from LEP
- Re-opening the High Street Fund launched working with partners to develop a strategy for our towns and larger villages.
- Business needs survey being carried out this will inform Recovery Plan

# Finance, investment and corporate services portfolio

- Business Grants totalling over £39M now paid to over 3,200 businesses.
- Discretionary Scheme for an additional £2M set up and open for applications.
- ICT workplan is under review in light of recent events and learning from remote working and business continuity experiences.
- Treasury Management incomes have reduced, but we have completed on a Commercial Property Purchase; we are an administration which takes a long term view.
- The overall net financial impact to April and May totals £141,000



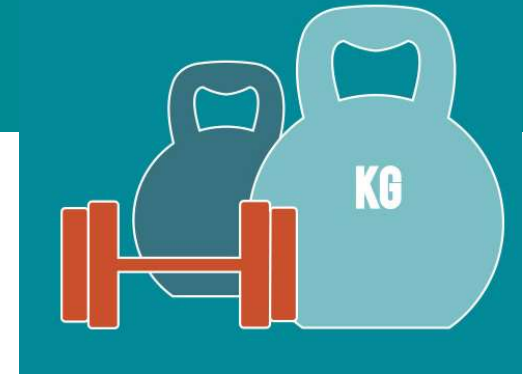
# Environment portfolio



- Waste and Recycling collection tonnages have increased during lockdown. The Garden Waste Service has over 2,000 **New** customers.
- Where possible Public Toilets are being re-opened on a phased basis, but only where it is safe to do so and social distancing can be achieved.
- Signage has been installed at all of our open spaces and coastal amenity sites to remind people of the social distancing guidance.
- Food safety teams have been exceptionally busy advising businesses in preparation for re-opening.
- The overall net financial impact to April and May totals £197,000

# Leisure and wellbeing portfolio

- Dibden Golf Course re-opened on Saturday 16th May – under new course rules set by Golf England. These arrangements are working very well with the Course fully booked most days. The Clubhouse remains closed awaiting further guidance.
- Health and Leisure staff have now been furloughed until the end of June, other staff continue to be redeployed on the hub.
- Some of the Health and Leisure team are working on a recovery plan to be presented at Recovery Task and Finish group.
- The overall net financial impact to April and May totals £835,000





# Planning and infrastructure

- Three Virtual Planning Committee held to date
- Working with HCC on Covid 19 Social Distancing safe places to walk and cycle including helping Reopen the High Streets
- All coastal car parks reopened 13 May 2020 charging re-introduced
- All Council owned car parks re-introduced charging 1 June 2020
- The overall net financial impact to April and May totals £635,000

